



*Sedgwick County...
working for you*

**Sedgwick County
Developmental Disability Organization**

Dee E. Staudt, LMSW, LCAC – Director

615 N. Main • Wichita, Kansas 67203 • T (316) 660-7630 • F (316) 660-4911 • TTY (316) 660-4893

***SEDGWICK COUNTY DEVELOPMENTAL DISABILITY COMMUNITY COUNCIL
MEETING MINUTES***

July 20, 2018

11:30 a.m. – 12:00 p.m.

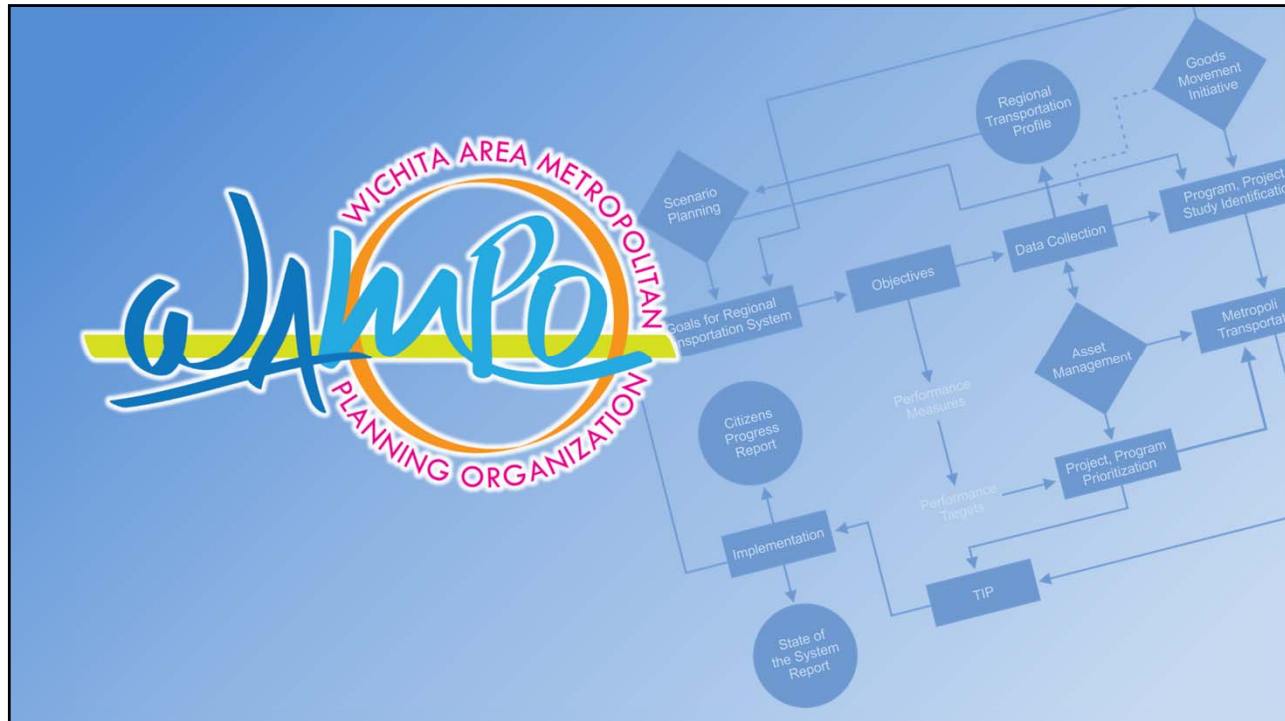
615 N. Main, Wichita, KS

Tricia Thomas, Communications Manager with the Wichita Area Metropolitan Planning Origination (WAMPO) presented on the Human Services Transportation Plan. A copy of the PowerPoint used for the presentation is attached. WAMPO works with the regional transportation authorities to deliver safe, efficient and supportive transportation options and policies. Tricia discussed the trends impacting transportation needs in the area, as well as demographic trends.

The presentation was designed to gather feedback on the Human Services Transportation Plan including identification of driving forces, challenges, opportunities and matters of equity. After the presentation, Tricia asked participants to vote on the current goals and strategies of the Human Services Transportation plan to indicate whether they remain an important priority or not.

The goals/strategies of the Human Services Transportation Plan Tricia asked participants to determine the importance of were:

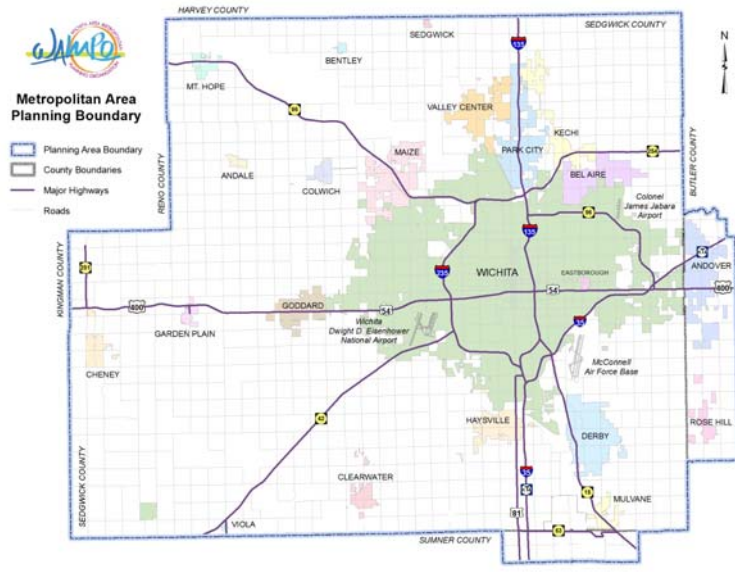
- 1) How important is it for our community to actively look for creative and new ways to pay for transportation services?
- 2) How important is increasing the awareness of transportation needs and services in the community?
- 3) How important is it for organizations providing transportation services to communicate and work together to meet the needs of the community?



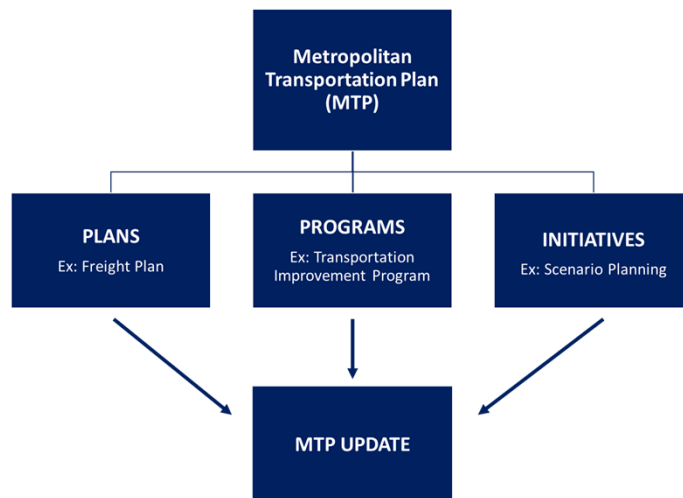
Who are we? What do we do?

WAMPO works with (and for) the region to deliver safe, efficient, and supportive transportation options and policies.

WAMPO's Planning Area



The Transportation Planning Process



Scenario Planning? What's That?

“What could the future be?”



Trends for Our Metropolitan Plan Area

1. Social and Demographic Changes
2. Need for a Regional Identity
3. Technology
4. Financial Uncertainty
5. Employment Demand and Skills Required
6. Land Use

Trends - Demographics

1. Social and Demographic Changes

- “Graying” of region
- Reduction in the size of households
- Population moving to large metropolitan areas
- Suburbs now and the future are not your parents suburbs
- The need to attract more new folks and keep the 18-54 year olds in the area



Trends

2. Need for a Regional Identity



Trends - Technology

3. Technology

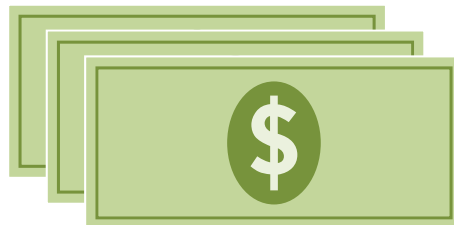
- Introduction of connected and autonomous vehicles for goods movement/freight
- Quick turnaround time for deliveries
- Unfilled capacity at Eisenhower airport



Trends – Financial Uncertainty

4. Financial Uncertainty

- Financial uncertainty is the only certainty for the future



Trends - Employment

5. Employment Demand and Skills Required

- Brain drain
- The type of skills
- Access to transportation for training and employment opportunities
- Entrepreneurial initiatives need transportation to achieve success



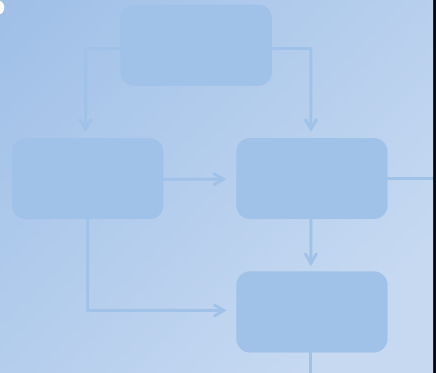
Trends – Land Use

6. Land Use

- Decreasing household size
- Housing ownership changes
- Urban center is important to the region
- Need to focus on quality of space



Questions?



We Asked the Community

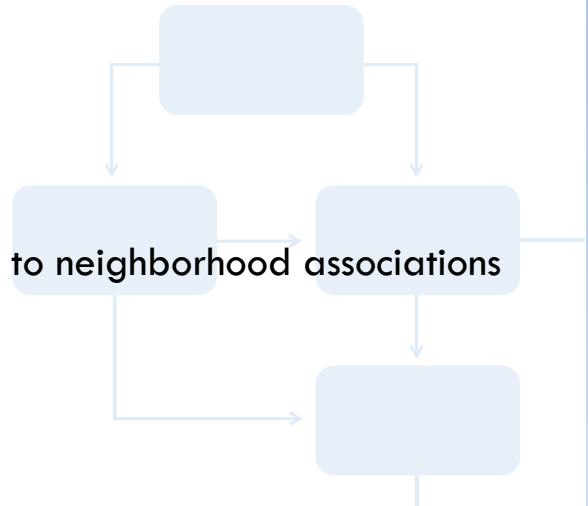
What are the:

- Driving Forces
- Issues/Challenges
- Opportunities
- Equity Matters to include



Activity to Date

- Since October 2017
 - 24 Community Meetings
 - Over 260 People
 - Ranging from age 15 to 83
 - Everyone from elected officials to neighborhood associations



HERE IS WHAT WE HAVE HEARD SO FAR

DRIVING FORCES

- Funding
- Demographic trends
- Active Transportation
- Workforce demands/skills
- Aging population
- Maintenance of good quality infrastructure
- Technology
- Development of regional image for economic development
- Health initiatives/insurance/employee wellness

CHALLENGES/ISSUES

- Finances/Funding
- Lack of regional planning/a regional plan
- Safety
- “Brain Drain”
- Limited public transit routes
- Urban/rural split; support of position views; state legislature actions

OPPORTUNITIES

- Low cost of living
- System reliability (travel times for commercial and commuter trips)
- Wichita State University, Innovation Campus, Wichita State University/Wichita Area Technical College collaboration
- Availability of renewable energy
- Bike/pedestrian infrastructure

MATTERS OF EQUITY

- Access to public transit
- Funding (too much to roads and bridges)
- Distribution of transportation services in the region
- Funding priorities
- Affordable job training access
- Income – transportation unaffordable

Draft Scenarios

- Scenario 1: Maintaining Current Direction
- Scenario 2: Maintaining with Performance Targets
- Scenario 3: Urban Renaissance-Enhanced Equity
- Scenario 4: Local Transportation Investment
- Scenario 5: Repurposing Existing Infrastructure
- Scenario 6: Technology as a Driving Force

Scenario 1: Maintaining Current Direction

The Status Quo Continues:

This strategy continues the current maintain and preserve investment approach for the urbanized area.

It also recognizes that local governments will continue to make their own decisions about how to invest in their infrastructure using their community's resources.



Scenario 2: Maintaining with Performance Targets

This strategy continues the current “maintain and preserve” investment approach for the urbanized area, but refines a focus on achievement of the performance targets adopted by WAMPO, which include:

- Travel speeds
- Bridge condition
- Freight
- City of Wichita Transit Targets



Scenario 3: Urban Renaissance-Enhanced Equity

Land use changes emphasizing walkable urban neighborhoods drive transportation decisions.

Recognizes "brain drain" and graying population impacts as well as changing wants and needs for more transport options by different generations.

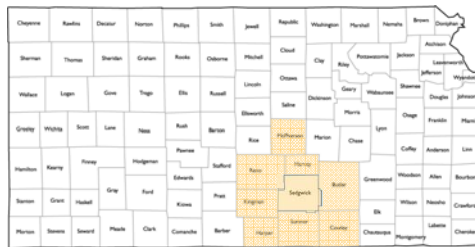
Shifts some investment to meet changing needs and wants of growing segments of population.



Scenario 4: Local Transportation Investment

Shortfalls and uncertainties in state and federal transportation funding encourage the region to raise local revenue and make substantial investments in the transportation system.

Focus shifts from one county with several communities to a multi-county regional transportation planning and implementation system



Scenario 5: Repurposing Some of the Existing

Changes in land use, demographic changes and funding uncertainties lead local leaders to create a priority funding and investment plan that more realistically reflects the community based on local data.

Some streets that have reduced usage are repurposed as complete streets so that longer-term investment in operating and maintenance costs is reduced.



Intersection of George Washington Blvd & Pawnee



Possibilities



13' Travel 6+3 Buffered Bike Lane 22' Center Median 6+3 Buffered Bike Lane 13' Travel

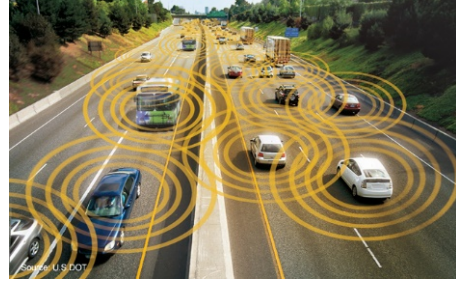
~66' Curb to Curb

Scenario 6: Technology As a Transportation Driver

Autonomous and connected vehicles will become a growing driver in how people get around.

- Increasing role of Technology
- Driverless trucks for freight is imminent

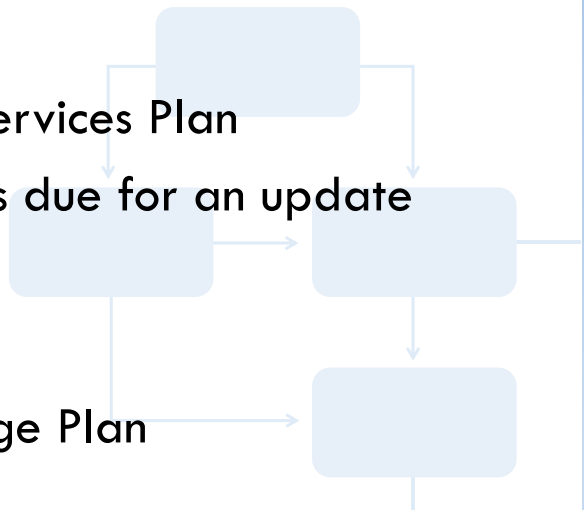
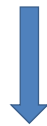
Technology could also change land use patterns and encourage communities to continue to spread out since vehicle ownership might not be so important in the future.



So Here's What I Need From You. . .

Our Human Services Plan
("coordinated plan") is due for an update

Long Range Plan



What is a Human Services Plan?

This plan identifies the transportation needs of individuals with disabilities, seniors, and people with low incomes.



Our Plan

- Talk to the community about the goals and strategies in our current plan
- Based on what we hear, make any recommended changes or corrections to the current goals and strategies
- Update the plan and reflect what we heard in the LONG RANGE PLAN update.

Please Take Our Survey & Share!

Please consider sharing the survey link with others who may be interested in transportation planning for older adults and people with disabilities:

www.publicinput.com/2292

For additional information please contact:



Tricia Thomas
Communications Manager

271 W. 3rd St., Ste. 208
Wichita, KS 67202-1212

316-352-4860
tthomas@wichita.gov

Thank You

